



Great Lakes
DENTAL TECHNOLOGIES

800.828.7626 > smartmovesaligners.com



the smarter way to a beautiful smile™





smart moves is more than just clear aligners. smart moves integrates clear aligners with sophisticated cloud-based 3D software, realistic treatment plans, and hands-on support.

WE'VE BEEN LISTENING. Your colleagues are frustrated with unrealistic proposals from their aligner company. They want to speak with an experienced technician who can help them with their cases. And they're angry that some aligner companies are selling aligners directly to the public.

With smart moves, you get realistic treatment projections that don't stretch the limits of what aligners should do. Realistic treatment projections mean realistic timelines. Realistic timelines matter so you can manage patient expectations and know how many aligners it will take to complete the case. With smart moves, you can speak with an experienced technician in the United States who will work with you one-on-one.

Our promises to you.

OUR PREDICTABILITY INDEX PROVIDES A BASELINE FOR CASE OUTCOMES SO OUR TREATMENT PROJECTIONS WILL ALWAYS BE REALISTIC.

WHEN YOU CALL, YOU CAN SPEAK WITH AN EXPERIENCED TECHNICIAN TO DISCUSS YOUR TREATMENT PLAN OR MAKE ADJUSTMENTS.

AND WE WILL NEVER SELL ALIGNERS DIRECTLY TO THE PUBLIC.

It's easy to get started.

- » smart moves is compatible with your intraoral scanner. Just register for an account at smartmovesaligners.com and upload a scan. Within a few business days we'll provide you with a treatment projection that you can view, edit, and approve right within the portal.
- » When you're happy with the proposal, you can share the visual simulation with your patient to increase case acceptance.
- » The smart moves portal can be used throughout treatment to track case progress and make refinements if necessary.



Find the best approach for your patients from these solutions.

Whether your patient needs the full arch alignment of **smart moves complete**, a bit of anterior refinement from **smart moves classic**, or braces with **smart moves exceed**, smart moves has multiple options for realistic outcomes.

smart moves[®] complete



smart moves complete is a clear aligner solution designed for full arch treatment. Treatment is managed through a cloud-based platform that allows you to modify and approve cases. Proposals show treatment simulation, the number of aligners needed, and projected treatment time.

smart moves[®] classic



smart moves classic is designed for anterior tooth movement and uses a combination of hard/soft clear aligners for up to 1mm of movement per set of aligners. It's ideal for orthodontic relapse or pre-restorative cases.

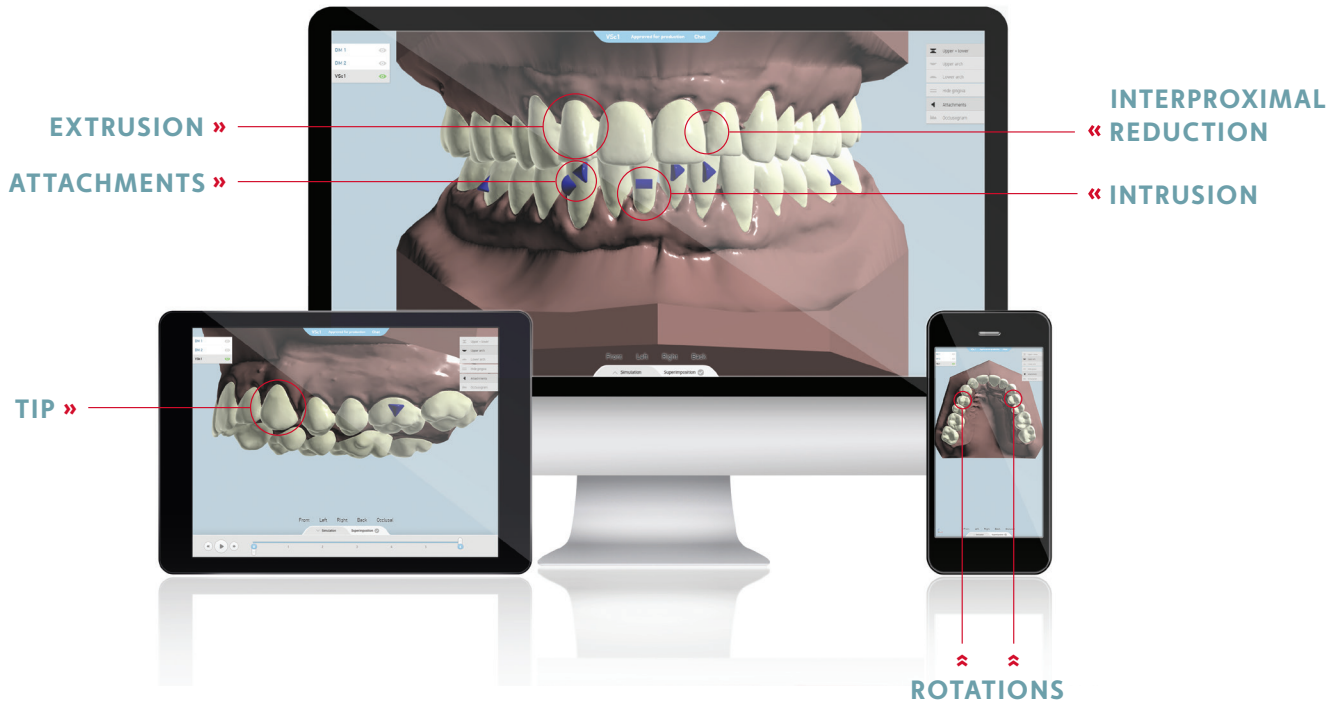
smart moves[®] exceed[®]



smart moves exceed is designed for patients who require orthodontic treatment beyond the scope of clear aligners. It uses the same cloud-based platform as smart moves complete to strategically place brackets and simulate the final result. Accurate bracket placement is ensured through the use of indirect bonding trays.



The smart moves platform allows for dynamic, flexible control of your case. You can let us handle the proposed revisions or you can make adjustments yourself.



**smart
moves**®

Get in touch with us to learn more from a smart moves expert.
800.828.7626 > smartmovesaligners.com